



'Cricket in the Community'

An overview of the cricketing structures and programmes within Worcestershire

*Presented by; Stuart Lampitt (Cricket Development Manager)
Worcestershire Cricket Board*





Road Map

- Structure of the Worcestershire Cricket Board
- Overview of community programmes and player development pathway in Worcestershire
- Summary & Questions





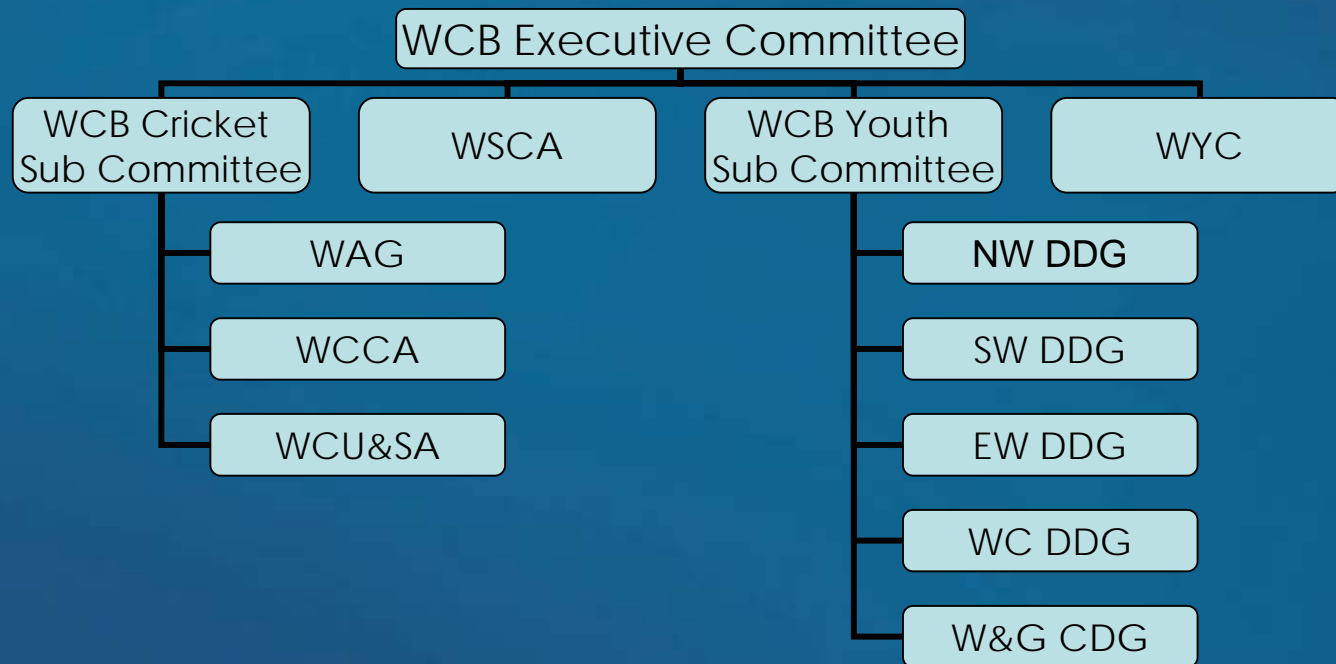
The Worcestershire Cricket Board

- One of 38 County Cricket Boards affiliated to the England & Wales Cricket Board (ECB)
- Responsible for the overseeing, management and delivery of recreational cricketing programmes within Worcestershire
- Responsible for implementing the initiatives, practices and procedures as directed by the ECB





The Worcestershire Cricket Board Structure





COMMUNITY PROGRAMMES - SCHOOLS

Community Coaches Scheme

- September 2005 saw the initiation of the WCB Community Coaching Scheme
- The CSCS scheme is funded by various partners including;
 - The Cricket Foundation
 - DCMS – PESSCL
 - Active Sports
 - Sport England
 - Apollo 2000/Sportsmatch
- 3 Part Time Community Coaches are employed to deliver half-term schemes of work in schools targeting Year 5 & 6 pupils





COMMUNITY PROGRAMMES - SCHOOLS

Community Coaches Scheme

- September 2006 will see a more structured county wide delivery of CSC programmes
- Working with PDM's from SSP's across the county CSC's in all sports will be working around family's of schools in half term blocks
- Each family of schools is linked to a 'Focus Club' thus forming an exit route into club cricketing circles





COMMUNITY PROGRAMMES - SCHOOLS 'Chance to Shine'

- The Cricket Foundation 'Chance to Shine' appeals aim is to *'regenerate the game of cricket within state schools'*
- **To raise** a minimum of £25 million over five years mainly from private and commercial donors.
- **For the Government to match** the sum raised up to a maximum of £25 million.
- **To spend** Appeal income over a period of at least ten years.





COMMUNITY PROGRAMMES - SCHOOLS

A Chance to Shine – How?

- **Create** *Clusters* of strategically-identified schools (Sports Colleges, secondary and primary schools) and link these with *Focus Clubs* and, where possible, independent schools.
- **Provide** Cricket Foundation *Coaches for Schools* based at *Focus Clubs* to coach cricket within *Clusters* of state schools.





COMMUNITY PROGRAMMES - SCHOOLS 'Chance to Shine' in Worcestershire

- In 2006 – 3 Focus Clubs have been selected to deliver the scheme
 - Kidderminster Victoria CC
 - Pershore CC &
 - Ombersley CC
- Qualified Coaches from the 3 clubs are currently delivering 20 hours coaching per week for a 12 week period into identified Families of Schools funded by C2S





COMMUNITY PROGRAMMES - SCHOOLS

'Chance to Shine' – Case Study

Ombersley CC

- A structured 12 week programme is currently being delivered by Ombersley CC's ECB qualified MQS Level 2 coaches into the Chantry High School Family of Schools
- 2 x hours per week into the 8 feeder Primary Schools (based around Years 5 & 6) and
- 4 x 1 hour sessions per week to years 7,8,9 & 10 at the Chantry High School





COMMUNITY PROGRAMMES - SCHOOLS

'Chance to Shine' – Case Study

Ombersley CC

- The programme is guaranteed for a minimum of 3 years with schools commitment being to;
 - Enter organised competitions
 - Commit to training Teachers
 - Work within the cluster family of schools to develop cricketing competitions
- The Chantry High School has also been selected as 1 of 50 schools in the country to receive a NTP to further develop opportunities for all schoolchildren to become involved





COMMUNITY PROGRAMMES - SCHOOLS Competitions

- The WSCA in partnership with ECB/WCB is the committee responsible for the organisation and delivery of inter school competitions
- A total number of 11 inter school competitions are currently organised at various age groups, including;
 - 3 x Kwik Cricket (Soft Ball Competitions)
 - 8 x Hard Ball Competitions





COMMUNITY PROGRAMMES - SCHOOLS Competitions - Kwik Cricket (Soft Ball)

- Competitions in Worcestershire are organised by the WSCA in partnership with ECB/WCB
- The ECB has recently acquired a new sponsor for Kwik Cricket competitions – Asda
- Currently 3 x inter school Kwik Cricket tournaments are organised and delivered by the WCB/WSCA in partnership with the 7 constituent Local Authorities;
 - Asda Year 6 (Mixed)
 - Asda Year 6 (Girls Only)
 - Asda Year 5 (Mixed)
- A total of 24 Local District Festivals and 3 County Finals are scheduled to be delivered in all in 2006



COMMUNITY PROGRAMMES - SCHOOLS Competitions - Kwik Cricket (Soft Ball)

- 2006 figures;
 - Asda Year 6 (Mixed)
 - 11 District Tournaments delivered
 - 91 schools entered in 2006 (41% increase from 05)
 - Asda Year 6 (Girls only)
 - 7 District Tournaments organised
 - 42 schools entered in 2006 (31% increase from 05)
 - Asda Year 5 (Mixed)
 - 6 District Tournaments organised
 - 45 schools entered in 2006 34% increase from 05)





COMMUNITY PROGRAMMES - SCHOOLS

Competitions – Hard Ball

- A total of 8 Hard Ball Competitions are organised at 5 different age groups as follows;

- WSCA U11	(18 entries)
- ESCA U12 Bunbury Competition	(17 entries)
- WSCA U13 County Cup	(22 entries)
- WSCA U13's 6-a-side	(24 entries)
- ECSA U14's Lord's Taverners	(30 entries)
- ESCA/Daily Telegraph U15 20/20	(25 entries)
- Worcester City High Schools Lge	(7 schools)

(Years 7, 8, 9 & 10)

- Entries are generally lower as facilities, time and resource are all factors to overcome





COMMUNITY PROGRAMMES - CLUBS

- Exit routes in to club cricket from schools are provided by a total of 52 affiliated cricket clubs who organise junior sections
 - 41 within Worcestershire
 - 11 from bordering counties
- 38 clubs are currently identified as 'Focus Clubs' and are assisted in working towards the Clubmark accreditation and developing their junior sections
- Focus Club commitment involves a commitment to junior development, working with ECB to M&E and commitment to achieve Clubmark



COMMUNITY PROGRAMMES - CLUBMARK

- Currently 17 affiliated clubs have gained accreditation (13 from within the county)
- The Clubmark accreditation introduces core criteria to set standards to which clubs should aspire to in the following categories;
 - Duty of care and child protection
 - Coaching and competition
 - Sports equity and ethics
 - Club management





COMMUNITY PROGRAMMES - COMPETITIONS

- The Youth Development Sub Committee is responsible for the organisation of inter club competition programmes
- In 2006 entries have been received from 52 affiliated cricket clubs for junior competitions organised by the WCB at 8 different age levels from Under 10' to Under 17's
- A total of 312 junior teams have been entered in all competitions





COMMUNITY PROGRAMMES – COMPETITIONS

- The breakdown of clubs entering teams in league competitions is as follows;

- Under 10's	(22 teams)
- Under 11's	(39 teams)
- Under 12's	(32 teams)
- Under 13's	(35 teams)
- Under 14's	(29 teams)
- Under 15's	(27 teams)
- Under 17's	(10 teams)





COMMUNITY PROGRAMMES – COMPETITIONS – Girls only

- The Worcestershire Womens & Girls Cricket Development Group is the body responsible for organising competitions for girls
- In 2005 a total of 8 affiliated clubs entered junior girls teams in the inaugural Under 13 Lady Taverners competition & 4 in the Under 15's
- Focus clubs for girls cricket are identified through local Development Groups through club to club links





COMMUNITY PROGRAMMES – District Representative Cricket

- In 2005 the WCB through the Youth Sub Committee introduced sub county representative - District Teams
- District teams at Under 11 & 13 are selected from 4 Districts created through Cricket Board plans
- Funding was initially provided through Active Sports
- Each squad receives a full 6 week winter indoor coaching programme, a summer outdoor practice programme and a 3 day match festival





COMMUNITY PROGRAMMES – District Representative Cricket

- A total of 102 talented cricketers went through the District programme in 2006 and received excellence coaching from MQS ECB Level 2 coaches
- The 2006 festival has recently been completed with 11 out of 12 matches being fulfilled
- Integration of talented players from district into county age group teams completes the player pathway within the county





COMMUNITY PROGRAMMES – County Representative Cricket

- To complete the player pathway a total of 11 County age group squads for boys and girls are selected annually
- The following squads are delivered;
 - Boys (Under 10 to Under 17 inclusive)
 - Girls (Under 13, 15 & 17)
- All squads receive a full 8 week winter indoor practice programme, a spring outdoor practice and playing programme and a full summer match playing programme





COMMUNITY PROGRAMMES – County Representative Cricket

- Wherever possible all squads are led by an ECB Level 3 coach
- Squads at Under 13, 14, 15 & 17 compete in national competitions
- All elite players are monitored by ECB Regional Coaches and also nominated for WCCC Academy trials





The WCB Cricket Sub Committee

- WCB Cricket Sub Committee is responsible for the overseeing and delivery of Senior Cricketing Leagues in Worcestershire
- There are currently 7 senior cricketing league structures in which affiliated clubs compete;
 - The B&DPCL (10 Clubs)
 - The WCL (66 clubs)
 - The Cotswold Hills League (14 clubs)
 - The Worcs Evening League (18 clubs)
 - The Wilden Industrial Estates Cricket League (16 clubs)
 - The Worcestershire Indoor League (32 clubs)
 - The Worcestershire Sunday Cricket League (20 clubs)





Worcestershire Cricket Coaches Association (WCCA)

- The WCCA is the body responsible for delivering Coach Education programmes within the county
- The WCCA administers annually the delivery of 3 x UKCC Level 1 and ½ x UKCC Level 2 coaching courses for volunteers
- Coach development workshops are also organised to assist volunteers to develop coaching abilities and styles
- All courses are subsidised by the ECB





Worcestershire Association of Groundsmen (WAG)

- WAG is the body responsible for delivering training courses for grounds-people in association with the Institute of Groundsmanship within the county
- 1 x Level 1 courses (Part A – preparation & Part B renovation) and a Level 2 course are delivered by the WCB Pitch Advisor annually
- WAG also offers recreational clubs access to the WCB Pitch Advisor and offers assistance to clubs in improving its fine turf and artificial surfaces (PQS)





Worcestershire Cricket Umpires and Scorers Association (WCU&SA)

- WCU&SA is the body responsible for delivering training programmes for umpires and scorers within the county
- Candidates are required to sit introductory, intermediate and advanced assessments all delivered through the association
- All courses are subsidised through the ECB





National Initiatives (Facilities)

- The ECB Funding & Facilities Department oversees the CCDP programme
- In 2004 £9.4m was guaranteed through the programme and distributed nationally through the Focus Club network
- Four funds were introduced
 - £3.3m Fine Turf Facilities
 - £3.3m NTP's
 - £1m Pavilion and Changing Extensions
 - £1m Indoor Facilities





National Initiatives (Facilities)

- Focus Clubs were selected against a national screening template for which a main list and a reserve list of Focus Clubs was produced
- 7 clubs from within the county were selected and have received over the past 3 years major facility development including;
 - NTP Nets
 - Fine Turf upgrades &
 - Changing Facility upgrades





National Initiatives (Child Protection)

- Child Welfare is managed by the ECB Welfare Department and cuts across all community programmes from schools coaching to representative teams
- In 2004 ECB introduced Safe Hands – The Child Welfare Policy
- The policy impacts greatly on recreational sports clubs particularly through the Clubmark initiative





National Initiatives (Child Protection)

- Since conception the WCB in partnership with the H7W CSP has delivered 5 'Time to Listen' course and trained a total of 95 Club Welfare Officers within recreational cricket clubs
- All courses are delivered by a trained tutor in partnership with the County Board Welfare Officer





Summary (Key Priorities)

- Work with key agencies to identify funding streams to develop CSC work programmes and increase opportunities to access sport
- Work with schools and clubs to create sustainable partnerships at grass roots level
- Work with 'Focus Clubs' to ensure the provision of a network of safe, effective and child friendly exit routes for all schoolchildren
- Continue to provide a clear player pathway for talented players



Questions ??

